

6D4N

北海道之旅

登别-洞爷-小樽-札幌 (JHA)

iJAPAN



熊牧场
Bear Ranch



企鵝巡游
Penguin Parade



白色恋人巧克力公园
Shiroikoibito Park



登别地狱谷
Noboribetsu Hell Valley



小樽运河
Otaru Canal

ITINERARY 行程表

第一天 吉隆坡

集合于吉隆坡国际机场，乘搭客机前往北海道。

第四天 札幌

(早餐)

自由活动

札幌APA度假酒店或同级

第二天 北海道新千岁机场-登别

(午/晚餐)

登别尼克斯海洋公园·企鵝巡游·登别地狱谷

登别尼克斯海洋公园 该公园拥有400种不同物种的约20,000只动物,展示了生物多样性。您可以欣赏海豚表演,海狮和海豹表演,企鵝游行等等。

登别地狱谷 是一个火山喷发的遗址,在这里,火山气体从灰黄色的岩石表面向外喷出,周围空气中充满了浓浓的硫磺异味。

洞爷观光酒店或同级

第五天 札幌

(早/午/晚餐)

北海道神宫·白色恋人巧克力工厂·啤酒厂·

北广岛MITSUI OUTLET购物城

北海道神宫 位于北海道札幌市中央区的一座神社。

白色恋人巧克力工厂 北海道知名饼干“白色恋人”的生产工厂,还可以免费享用ISHIYA独家甜点的咖啡店之一,在札幌酿造。

啤酒厂 北海道是日本啤酒的发源地。自1877年以来札幌啤酒作为该国历史最悠久,最受欢迎的啤酒品牌之一,在札幌酿造。

北广岛MITSUI OUTLET购物城 北海道东北地区最大规模的奥特莱斯购物城,国内外人气品牌全数集合。

札幌千岁特雷斯大酒店或同级

第三天 洞爷-小樽-札幌

(早/午/晚餐)

洞爷湖赛罗观景台·昭和新山·熊牧场·

Nikka威士忌余市蒸馏所·小樽运河·小樽工艺品街

洞爷湖赛罗观景台 这是一个观景台,可以看到洞爷湖的全景。您可以欣赏到湖泊,中岛群岛和富士山的全景昭和新山Usu,西山火山口,洞爷湖温泉区的火山烟。

昭和新山 是由火山喷发形成的火山,由于寒冷的气温和侵蚀作用的影响,昭和新山的山体正在逐渐缩小中。

熊牧场 约100只棕熊在公园。棕熊是北海道体型最大的野生哺乳动物,熊牧场里可以为棕熊喂食,见到食物的棕熊纷纷站起来向游客招手卖萌,憨态可掬,非常可爱。

Nikka威士忌余市蒸馏所 该酿酒厂由Nikka Whiskey Distilling拥有,于1934年开业。它是Nikka Whiskey拥有的两家酿酒厂中较老的一家,另一家是仙台附近Miyagikyo酿酒厂。

小樽运河 游览景色迷人的小樽运河,其周边的海运仓库遗址是小樽市乃至北海道的地标之一。

小樽工艺品坊 这里有北海道的手工玻璃制品,音乐盒和等等销售坊。参观玻璃和音乐盒工坊。

札幌APA度假酒店或同级

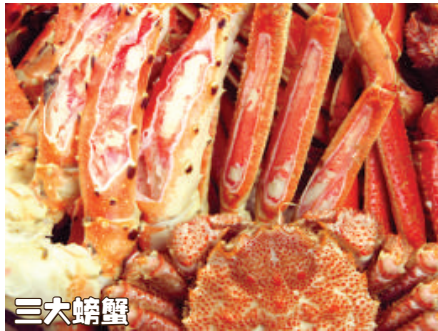
第六天 札幌-新千岁机场

(早餐)

早餐后,前往新千岁机场,返回温暖的家。

**以上行程顺序之安排依当地情况调整

特色风味



三大螃蟹



炸鸡排套餐

出发日期

航空公司

成人(两人一房)

小孩(占床)

小孩(不占床)

航班时间



东风旅游
GOLDEN TROPICS
Travel & Tours Sdn Bhd
(KKKP 4108, 624552-U)

30G, Jalan Danau Lumayan 1, Danau Lumayan Business Park,
Bandar Sri Permaisuri, Cheras 56000 Kuala Lumpur, Malaysia.

goldentropics.com.my info@goldentropics.com.my



03-9174 6888



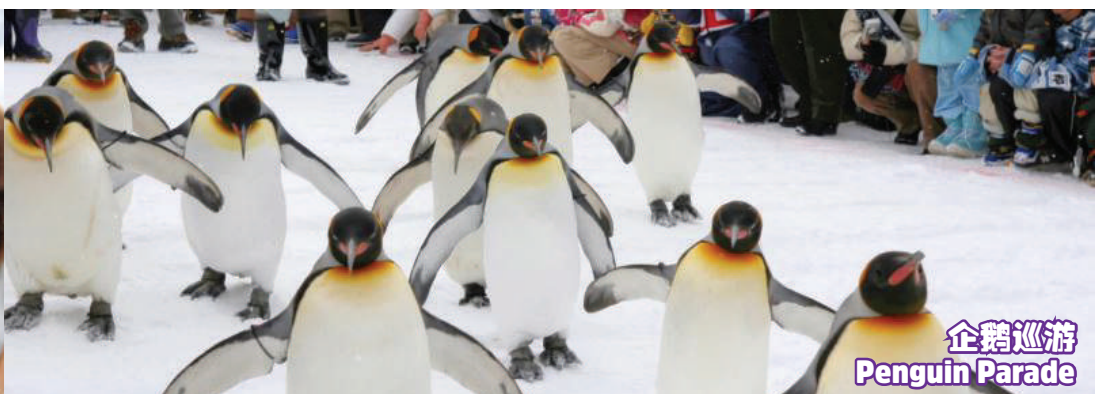
010-818 6688

6D4N HOKKAIDO TOUR

NOBORIBETSU - TOYA - OTARU - SAPPORO (JHA)



熊牧场
Bear Ranch



企鵝巡游
Penguin Parade



白色恋人巧克力公园
Shiroikoibito Park



登别地狱谷
Noboribetsu Hell Valley



小樽运河
Otaru Canal

ITINERARY 行程表

SPECIAL FLAVOR



3 Type of Crab



Japanese Tonkatsu Set

Dep Date / Airlines

Adult (twin)

Child (w bed)

Child (no bed)

Flight Schedule

DAY 1 KUALA LUMPUR

Assembly at airport for departure flight.

DAY 2 CHITOSE AIRPORT - NOBORIBETSU (L/D)

Noboribetsu Marine Nixe Park . Penguin Parade . Noboribetsu Hell Valley

Noboribetsu Marine Nixe Park - Home to about 20,000 animals in 400 different species, Noboribetsu Marine Park showcases biodiversity. You can enjoy a dolphin show, a sea lion and fur seal show, the penguin parade, and so much more.

Noboribetsu Hell Valley - Dramatic Crater with boiling sulfuric hot springs, volcanic steam plumes & hiking paths.

☞ Toya Kanko Hotel or similar

DAY 3 TOYA - OTARU - SAPPORO (B/L/D)

Lake Toya Sairo Observation Deck . Mt Showa Shinzan . Bear Ranch . Nikka Whiskey Distillery . Otaru Canal . Otaru Handicraft Street

Lake Toya Sairo Observation Deck - This is an observation deck which commands the whole view of Lake Toya. You can see a panoramic view of the lake, the Nakajima Isles, and Mt. Showa-shinzan, Mt. Usu, the volcanic fume from Nishiyama crater, Lake Toya Hot Spring district as well.

Mt Showa Shinzan - Volcanic lava dome in the Shikotsu-Toya National Park.

Bear Ranch - Around 100 Ezo brown bears in the park. When you feed with apple, the big brown bears will stand up together and make "give me" poses, which are very popular among the visitors.

Nikka Whiskey Distillery - The distillery is owned by Nikka Whisky Distilling, and was opened in 1934. It is the older of the two distilleries owned by Nikka Whisky, the other being the company's Miyagikyo distillery near Sendai.

Otaru Canal - Rows of old ware house built of stone stand along the canal. There is a stone-paved promenade and the old fashioned gas lamps are lit and provide a romantic atmsp here.

Otaru Handicraft Street - is an attractive, preserved merchant street in central Otaru, and famous with Kitaichi Glass and Music Box Museum.

☞ APA Hotel & Resort Sapporo or similar

DAY 4 SAPPORO (B)

Free & Easy

☞ APA Hotel & Resort Sapporo or similar

DAY 5 SAPPORO (B/L/D)

Hokkaido Shrine . Shiroikoibito Park . Beer Factory . Mitsui Outlet Kitahiroshima

Hokkaido Shrine - Enshrines four kami including the soul of the Emperor Meiji.

Shiroikoibito Park - Is a fantastic space based on the ideals of deliciousness, fun and stories of sweets from a bygone era.

Beer Factory - Hokkaido is the birthplace of beer in Japan. Sapporo Beer, one of the oldest and most popular beer brands in the country, has been brewed in Sapporo since 1877.

Mitsui Outlet Kitahiroshima - s an all-weather facility and visitors can shop for brand items regardless of the season or weather.

☞ Grand Terrace Chitose or similar

DAY 6 SAPPORO - CHITOSE AIRPORT (B)

After breakfast, transfer to Chitose Airport for departure flight. Home Sweet Home.

** Sequence of itinerary is subject to change based on local condition.